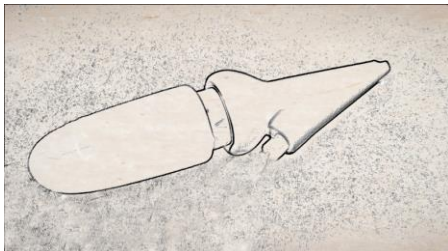
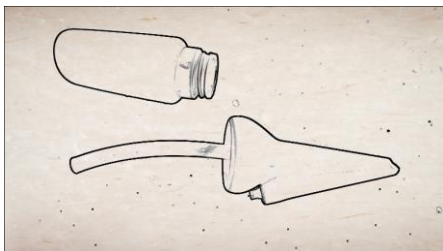


THE ENTIRE OPERATING MANUAL IS AVAILABLE ON LINE www.dentalairforce.com

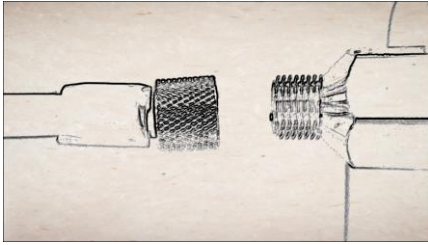
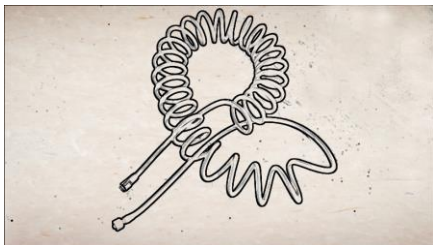
1. ASSEMBLING THE HAND PIECE



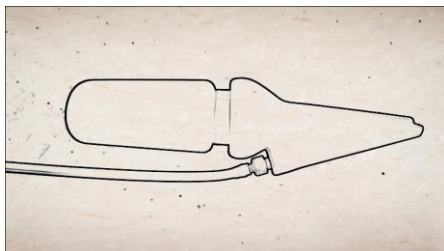
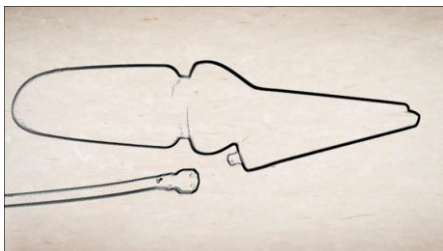
- A. Place the short tube end into the clear silicone bottle and screw the tip in place.

This assembly is referred to as a "hand piece".

2. ATTACHING THE COILED TUBING



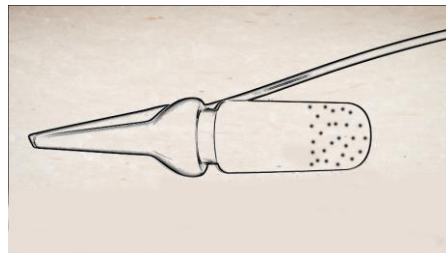
- A. Screw the metal fitting on the coiled tubing into the metal fitting on the main housing.



- B. Twist the other end of the coiled tubing (with the plastic quick disconnect) onto the plastic fitting in the silicone tip.

3. FILLING THE SILICONE BOTTLE WITH CLEANER

- A. Unscrew the silicone bottle from the tip.
Pour dental cleaner from the large plastic cleaner bottle into the silicone bottle.
- C. Fill $\frac{1}{4}$ - $\frac{1}{3}$ with dental cleaner and the rest with water.



- Chlorine dioxide or hydrogen peroxide can be used instead of water and will give a better cleaning while also bleaching teeth.
 - A slightly more aggressive cleaning can be obtained by using a little less water in the bottle. However, enough water &/or chlorine dioxide or hydrogen peroxide must be used to completely wet the slurry.
- D. Screw the tip back into the silicone bottle.
- E. Shake the hand piece to mix the dental cleaner and water into a slurry. (The dental cleaner will not dissolve.)
Squeezing the soft bottle will deploy the cleaner slurry.

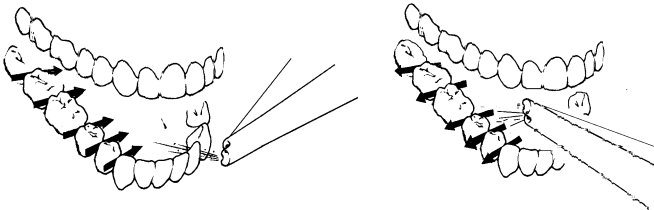
Quick Instructions continued on back....

4. TURNING THE SYSTEM ON/OFF



- A. The power button is located on the back of the main housing.
- B. Depress the button to turn ON. The compressor will start, but cleaner will not emit from the hand piece tip. Only when the hand piece bottle is squeezed will cleaner spray.
- C. Depress the button to turn the system OFF when you are finished cleaning your teeth.

5. CLEANING ALL SURFACES OF THE TEETH

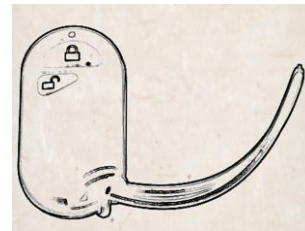


- A. Hold head over sink. Place tip in mouth. Keep mouth slightly open to allow the cleaner slurry to run out of your mouth and into the sink.
- B. Turn the system ON by depressing the button in the back of the main housing.
- C. **Gently squeeze the silicone bottle of the hand piece to emit cleaner.**
 - o Cleaner will emit along with air each time the bottle is squeezed.
 - o A light squeeze will emit a small amount of cleaner.
 - o A harder squeeze will emit a larger amount of cleaner.
- D. You can continue spraying without squeezing the bottle by using the cleaner already in the mouth to get a more thorough cleaning. The air stream from the system will propel the abrasive component in between teeth and around the gums.

5. CLEANING ALL SURFACES CONTINUED

- E. Periodically shake and squeeze the hand piece throughout the cleaning process to insure slurry is mixed and dispensed.
- F. Spray teeth for at least 2 minutes (30 seconds in each quadrant); longer if a more thorough cleaning is desired.
- G. Turn the system OFF by depressing the button in the back of the main housing.
- H. Rinse hand piece under running water thoroughly after each use.

6. OPTIONAL WIRELESS POWER SWITCH



transformer



wall receiver

- A. For your convenience, an optional wireless power switch can be purchased.
- B. This is very useful if you want to place the main housing under a counter OR if you want to use the hand piece in the shower. (Remember the main housing CAN NOT be placed in the shower, however, the hand piece can.)
- C. The switch comes with a small transformer and a wall plug receiver.
- D. To operate, turn the main housing ON (and keep in the ON position); then use the wireless switch to turn OFF and ON.